



Boost Client Productivity with Z Central from HP



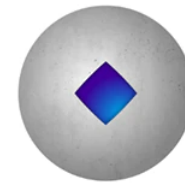
HP delivers a purpose-built solution stack for remote workstation access with Z by HP. This new solution rivals local work with significant performance, cost, and security advantages over competitors.

Benefits of HP ZCentral



Z Desktop Workstations

can be centralized and rack-mounted, keeping performance close to data and ensuring your clients enjoy dedicated remote performance for compute intensive workflows



ZCentral Remote Boost Software

increases productivity with high-performance, high-fidelity remote workstation access



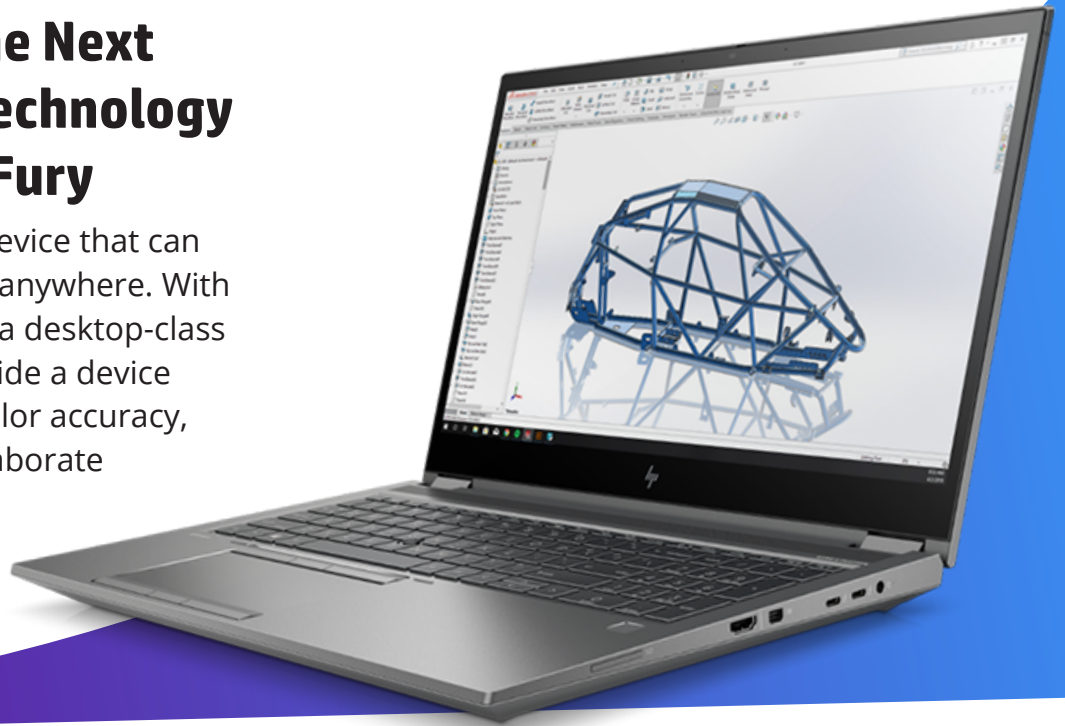
ZCentral Connect

manages access between groups of users and pools of workstations available

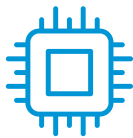


Give Your Clients the Next Generation of HP Technology with the HP ZBook Fury

Your clients are looking for a device that can tackle intense workflows from anywhere. With the ZBook Fury – now offering a desktop-class CPU in a laptop – you can provide a device with pro-graphics, complete color accuracy, and enable your clients to collaborate on-the-go.

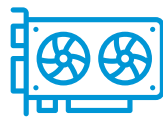


Pro-Level Specifications



Intel Core CPU

With the 12th Gen Intel Core i9 Processor, these devices are prepared for any and every workload



NVIDIA RTX GPU

Help clients be more productive and get more done with the ability to perform multiple tasks at once



VR Ready

The ZBook Fury gives content creators the professional graphics and processor performance they need to transform how they design, train, and collaborate



Up to 128 GB DDR5 SODIMM

Give them optimal memory for any task, without the fear of their device slowing down or over-working



Up to 12 TB Storage

Work without limits from anywhere with local storage built in



ISV-certified

These devices were third-party tested for peak performance with the applications your clients use the most

Begin selling these devices now with D&H! Contact our team of device specialists at HP@dandh.com to learn more or visit our mini site at www.dandh.com/HP.